

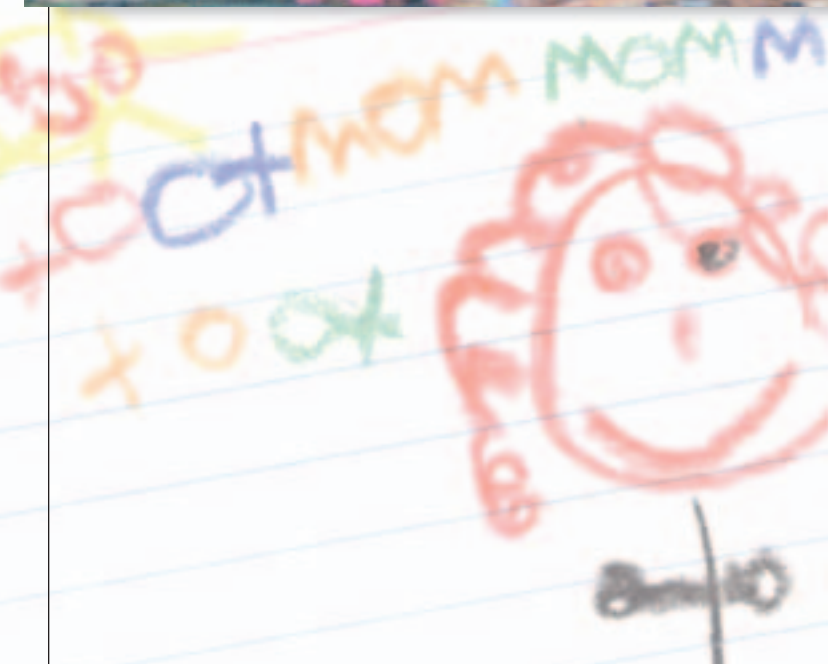


MORRIS CENTER YMCA



ENSURING A BRIGHTER FUTURE FOR OUR CHILDREN

*The Morris Center YMCA
Campaign to Develop
the Richard F. Blake
Children's Center*





126 YEARS OF CARING AND GROWTH

The Morris Center YMCA was founded in 1874 in Morristown, New Jersey. In 1980 we, moved to our present home in Cedar Knolls where we currently serve 5,400 members and over 10,000 local residents through a wide variety of programs, classes, and facility uses. Children are served through our Y's Owls Childcare Center, Camp Cedar Hill (our summer camp), the Y-Kids and Morris Plains after-school programs, The Children's Corner Childcare Center at Morristown Memorial Hospital, and, of course, through the programs and opportunities in our main facility.





THE CHILDCARE NEEDS OF THE COMMUNITY CONTINUE TO GROW



Our programs have been so successful that we found ourselves running out of space, particularly for our childcare needs, and even more specifically, for our infant/toddler care. In 2000 we embarked on a capital campaign to raise \$3 million to expand and renovate the Y facility and to build a new children's center so that we would be able to serve more youngsters. Presently, our off-site Y's Owls Center accommodates the needs of 130 children, ages 6 weeks to 5 years (we are open from 6:30 AM to 6:00 PM to serve the needs of our working parents), and we anticipate that our newly-acquired, building right-next-door will enable us, to care for 175 babies, waddlers, toddlers, pre-schoolers, and kindergartners. Currently, our two centers have waiting lists exceeding 200 preschoolers.

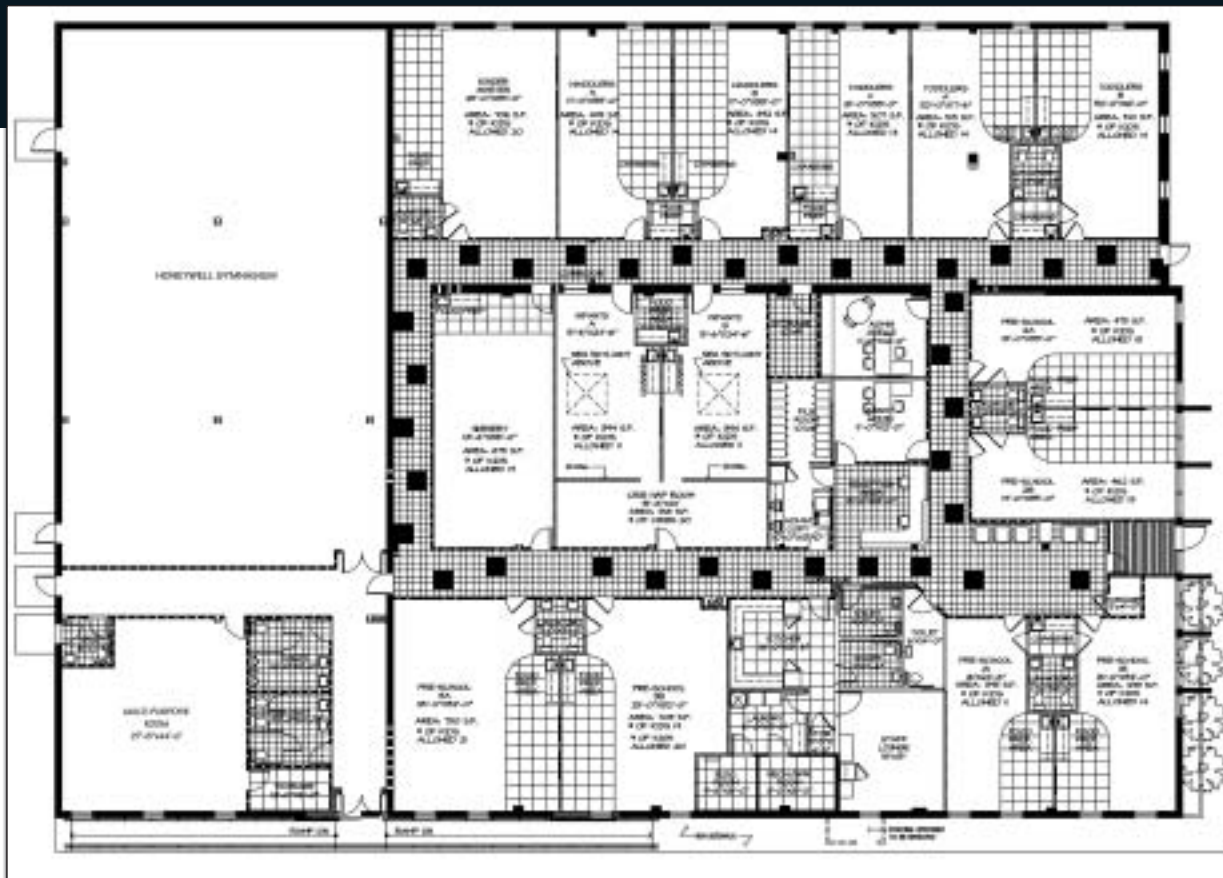




DETERMINING OUR OBJECTIVES FOR THE RICHARD F. BLAKE CHILDREN'S CENTER

Our future course is clear. With the successful culmination of our recent capital campaign, the completion of the expansion and renovation to the main facility, and the acquisition of the adjacent building for use as our childcare center, the Morris Center Y is strategically positioned to serve our constituents in an on-going tradition of excellence. The renovation of this facility to accommodate our newly expanded Richard F. Blake Children's Center will require an additional \$1.0 million of capital and program development. An increase of 50 preschoolers will be served with over 38% of the children coming from financially disadvantaged homes.





Architectural rendering of the proposed renovation.

SETTING A NEW GOAL TO CREATE A NEW FACILITY

Our plan calls for a 20,000 sq. ft. childcare center to replace the 7,500 sq.ft. outdated Y's Owls Center which has been in existence since 1988. (In fact, it was the first full-day care center in Morris County.) Our current facility is less than adequate and impedes our ability to offer essential services to more children. Our plan is to move the Y's Owl Center and our 125 children into the newly-renovated and expanded building directly next door to the main facility. We will be licensed for 175 children increasing our service to the community by providing care to an additional 50 children. The land between the two buildings has been generously deeded to the YMCA by Hanover Township. Creating a 13 acre "YMCA Campus" serving both adults and children alike. We are also planning to establish an After School Program and Campground for children, in kindergarten to second grade.



BUILDING ON OUR WEALTH OF CHILDCARE EXPERIENCE

The Y's Owls is currently licensed by the State of New Jersey to serve 125 pre-schoolers (ages 6 weeks to 5 years), and our enrollment is full to capacity with a lengthy waiting list. We have twice been accredited by the National Association for the Education of Young Children, an accreditation earned by only 7% of all childcare centers in America. Our program has been recognized as one of the best in New Jersey due in no small part to our exceptional staff.

Our teacher tenure is an incredible seven-and-a-half years. In addition, the Children's Corner at Morristown Memorial Hospital serves our hospital employees, some of whom qualify for financial assistance, and there is a waiting list for this program also. Our new facility will be able to handle the overflow. The waiting lists from both Y's Owls and the Children's Corner will be the first group offered slots in the new center.

The need is apparent and imminent, as is evidenced by our waiting lists, the longest in our Y program. Some of the neediest families in our community depend upon our childcare so that the parents can work and support themselves and their children. Over 38% of the infants and toddlers entrusted to our care are on scholarships.

